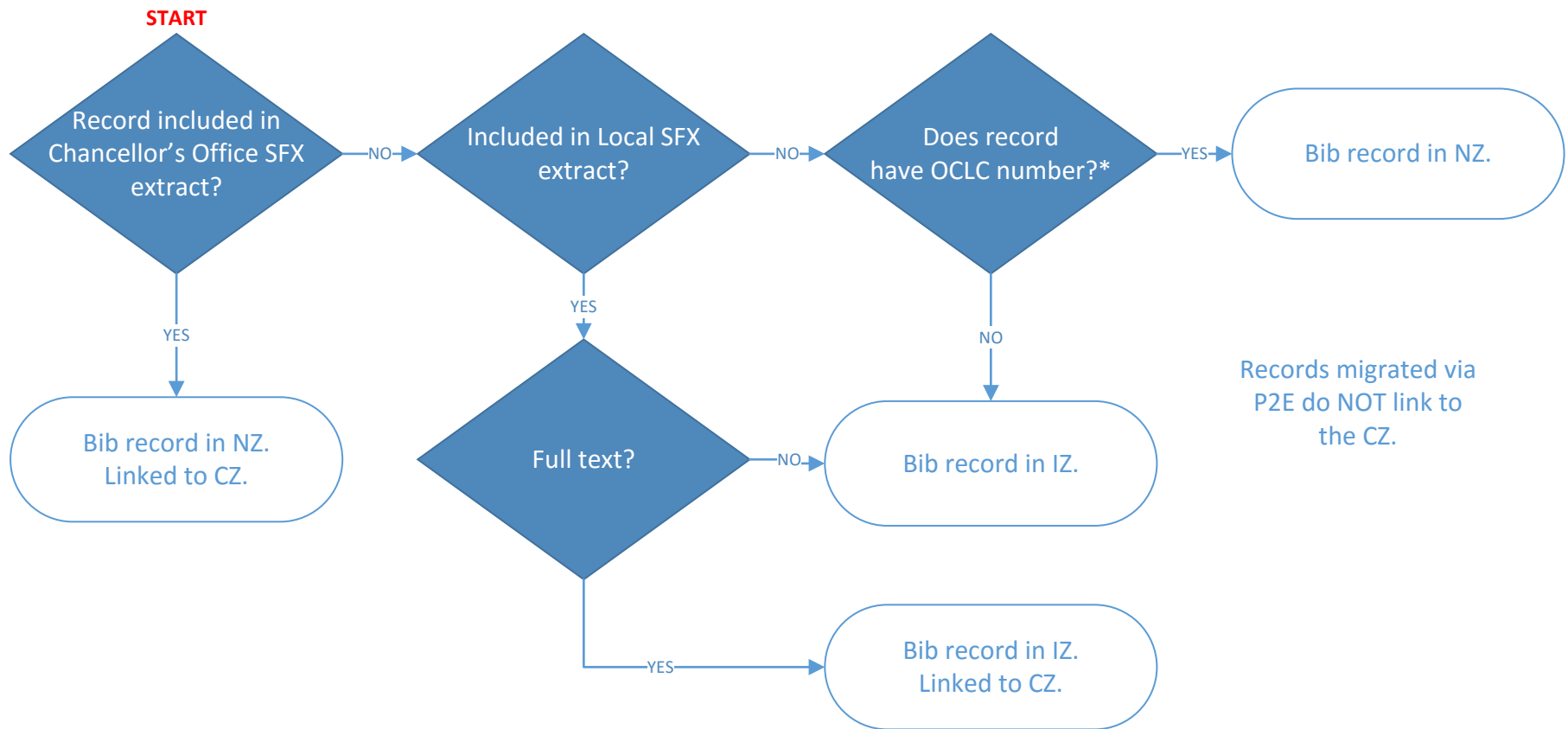


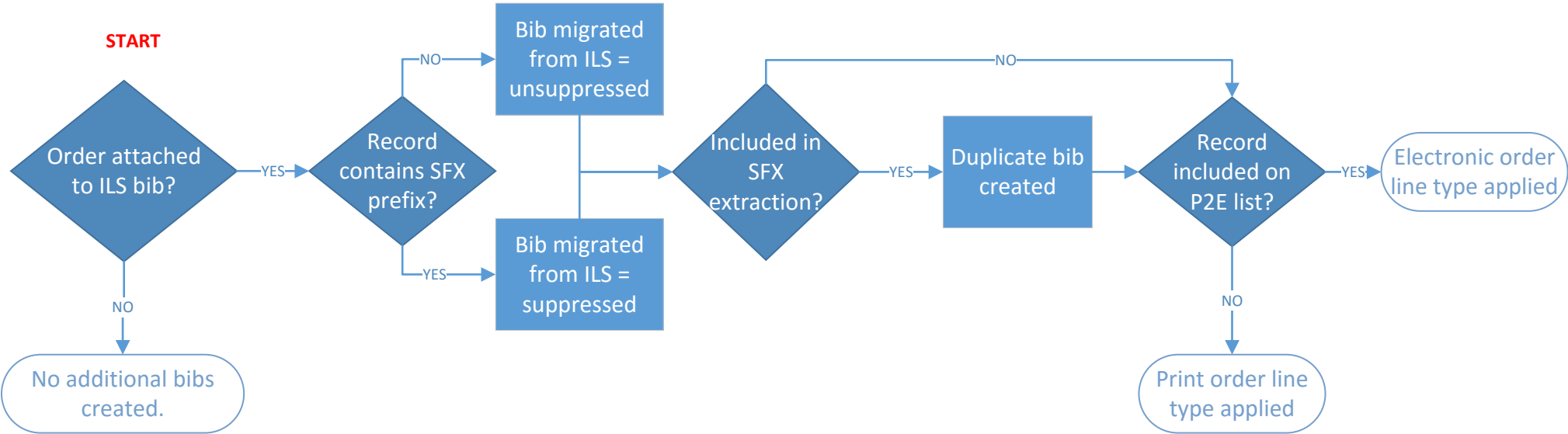
## What Zone did my bib record migrate to?



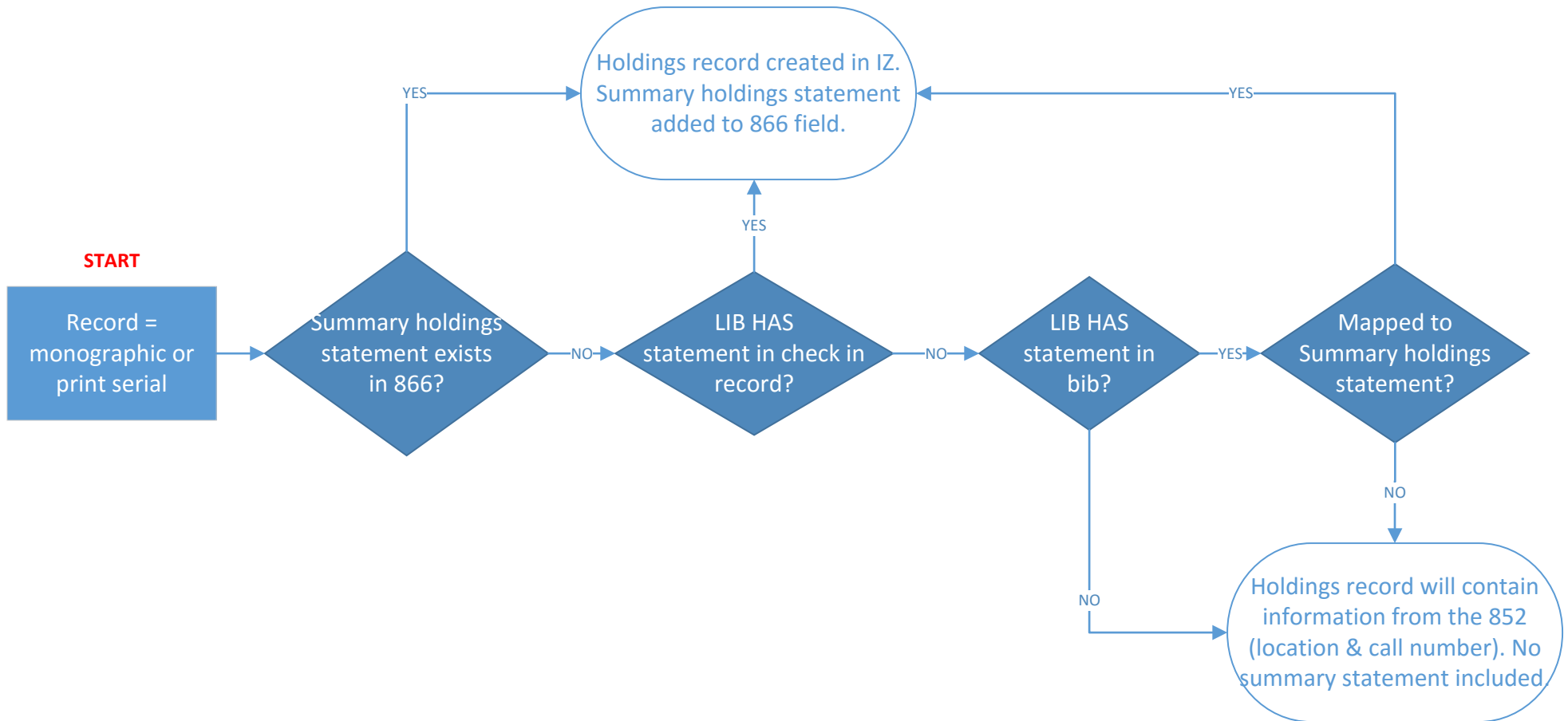
\*Holdings must have been reflected in OCLC during initial NZ creation.

IMPORTANT: the icons that appear alongside each resource in each zone indicate order and activation status. See Online Help Topic Repository Search in a Collaborative Network (<http://tinyurl.com/gq4jtcp>) for explanation of icons and indicators.

# Order records and SFX migration (for campuses migrating Acquisitions Data)



# Holdings and Items Created During Migration: Serials



# Holdings and Items Created During Migration: Physical or Electronic?

